

Resident Information Brochure

Cochrane Extraction Plant

24-hour Emergency Number

403.932.8510

In the event of an emergency, Inter Pipeline will be working with the AER and local authorities. Please review this information as it will help answer questions you may have around your role in the emergency response process.

Inter Pipeline Contacts

CEP Emergency Number **24 Hr: 403.932.8510**
 Cochrane Extraction Plant Office Bus: 403.932.8555

Inter Pipeline Ltd. – Calgary Head Office Bus: 403.290.6000

Local Authorities

Police, Fire, Ambulance **911**
Alberta Energy Regulator (AER) **24 Hr: 800.222.6514**

Government Contacts

Town of Cochrane Bus: 403.851.2500
 County of Rockyview Bus: 403.230.1401

Reception Centre

The Ranche House, County of Rockyview
 101 Ranchehouse Rd., Cochrane, AB

Please familiarize yourself with the important information in this brochure. If you have any questions please contact the appropriate individual or agency from the list above. Additional information and a copy of this brochure can be found at www.interpipeline.com.

16.04.2026

Flaring & Venting

Flaring is a controlled burning of natural gas in the course of routine oil and gas production operations. This burning occurs at the end of a flare stack.

Venting is the controlled release of gases into the atmosphere in the course of oil and gas production operations. These gases might be natural gas or other hydrocarbon vapours, water vapours, and other gases, such as carbon dioxide, separated in the processing of oil or natural gas.

Flaring and venting are associated with a wide range of energy development activities and operations, including disposal of gas associated with:

- Planned non-routine de-pressurizing of processing equipment for maintenance
- Un-planned non-routine depressurizing of processing equipment due to process upsets or emergency

The public should not be concerned when they see flaring or venting activities. But if concerned call the Cochrane Extraction Plant Office number listed on the front of this brochure.

Emergency Planning Zone

The primary hazard with high vapour pressure (HVP) products is a gas cloud with the potential for ignition. This EPZ is a safety measure based on the effects of a possible fire as per Transportation of Dangerous Goods (TDG) regulations.

Cochrane Extraction Plant Information	
Maximum Inlet Capacity	2.5 Bcf/d
Maximum Liquid NGL Production	100,000 BPD
Emergency Planning Zone (EPZ)	1 km



High Vapour Pressure (HVP) Products

HVP products include ethane, propane, butane, and Natural Gas Liquids (NGLs). The primary gas processed at CEP is methane with NGLs being extracted as mostly ethane and propane in liquid form. At atmospheric pressure, HVP products are gases. Under pressure, HVP products exist in a liquid state. In humid air, a leak of an HVP product may form a visible white cloud vapour. Under extreme conditions, pools of super-cooled liquid may briefly form. When HVP products vapourize, they expand (70 to 300 times) and can form a plume, which may drift downwind from the source under moderate wind speed conditions. Under higher wind speed conditions, the vapour would dissipate faster.

Main hazards:

- Potential explosion hazards from delayed ignition of drifting vapour cloud
- Fire hazard from burning gas and radiant heat
- Critical hazard because of oxygen deficiency as expanding gas cloud or plume displaces air at ground level

Potential Health Impacts

Hydrogen Sulphide (H₂S)

Hydrogen Sulphide (H₂S) is a flammable colorless gas with a characteristic odour of rotten eggs. It occurs naturally in crude and natural gas, volcanic gases, hot springs and can also result from a bacterial breakdown of organic matter. The sweet natural gas processed at the CEP contains trace amounts of H₂S that can follow the natural gas liquids. CEP uses a process on site to remove H₂S and sulphurs from the liquids. In the unlikely event that there is a release of H₂S, possible effects would include:

(PPM) Concentration	Possible Health Effects
1	Noticeable odour.
10-20	Obvious offensive odour.
50	May irritate eyes and breathing passages. Eyes may sting, and be red with increased blinking, tearing and tendency to rub eyes. Pre-existing respiratory disease may worsen. No permanent injury to eyes or breathing passages is expected unless exposure is prolonged. Odour-sensitive individuals may experience headaches, nausea, vomiting and diarrhea.
100	Strong objectionable odour initially, becoming less intense due to olfactory "fatigue" with continued exposure; increased possibility of irritation of eyes and breathing passages within one hour of exposure.
500	No odour due to olfactory paralysis. Severe irritation and possible permanent injury to the eyes and breathing passages within 30 minutes. Effects could become life threatening if exposure persists.
1,000	Immediate "knock down" and loss of consciousness. Death within moments to minutes. Immediate medical attention is required if victim is to survive.

Summarized from Alberta Health Acute Exposure Health Effects of Hydrogen Sulphide. For detailed information, visit www.albertahealthservices.ca

Overview

As part of the public safety process, Inter Pipeline has created this information brochure about its Cochrane Extraction Plant (CEP). Please review this information as it will help to answer questions you may have around your role in the emergency response process.

Inter Pipeline is the owner of the CEP, which is a natural gas liquids extraction plant. The CEP is located near Cochrane, Alberta, in the County of Rockyview. As a registered facility Inter Pipeline is required to have an emergency response plan (ERP) in place to respond to any incidents involving the CEP and as such exercises it annually.

Inter Pipeline & Local Authorities

Inter Pipeline has developed a comprehensive ERP that identifies and/or defines personnel roles, communication systems, available resources, evacuation procedures and other emergency management information.

In the unlikely event of an emergency situation, Inter Pipeline will implement its ERP and will work with local authorities, including municipalities, to ensure public safety, protect the environment and control the emergency situation.

Why You Are Being Contacted

Although the probability of an incident is low, Inter Pipeline has developed procedures to ensure your safety. We would like to ensure that:

1. You are aware of the Emergency Response Plan
2. You are aware of the Reception Centre and its location
3. You are advised of methods of communication to be used in case of an emergency
4. You are advised of public protection measures

As part of Inter Pipeline's emergency management program, Inter Pipeline is seeking to obtain your personal contact information as you reside in the immediate area of our operations.

Privacy of Personal Information

Inter Pipeline collects certain personal information from residents in order to enact the emergency measures as identified in this document. Inter Pipeline collects and uses this contact information for the purpose of administering its emergency response program, notification of major outages, emergency exercises or special events.

Public Preparedness and Notification

What to do in an emergency

Immediately move away from the area. Travel at right angles to the wind until you can relocate upwind from the gas source.

IF YOU HAVE A TELEPHONE, immediately call the Inter Pipeline emergency phone number listed on this brochure and follow instructions outlined by personnel. You may also call Alberta Energy Regulator (AER) at the number listed.

IF YOU DO NOT HAVE A TELEPHONE, As quickly as you can, get to a telephone, call the Inter Pipeline emergency phone number listed on this brochure.

Levels of Emergency

ALERT	ON SITE ONLY: Immediate control of the hazard with progressive resolution of the situation.
LEVEL 1	Low Impact: No danger outside the company property.
LEVEL 2	Moderate Impact: Potential exists for the emergency to extend beyond company property.
LEVEL 3	High Impact: Uncontrolled hazard; public safety is jeopardized.

Emergency Callout System

The **Emergency Callout system** is a telephone messaging system. This system may be used to provide residents with emergency information or instructions. When the phone rings, and is answered, the system will automatically issue an informative message about the situation and the appropriate public protection measures required. At the end of the message, the following menu options allow the resident to respond:

Action	Meaning
Press "1"	Confirm receipt of the message.
Press "2"	Resident requires assistance; a company representative will send someone to the location to assist the resident.
Press "3"	Request a call from a company representative.

If there is no acknowledgement by the resident, the system will continue to call and a company representative will be sent to the address you provided Inter Pipeline.

Public Protection Measures

Shelter - In - Place

Shelter-in-place instructions are often given during the initial assessment and response period. These instructions are given to the public when:

- There is not enough time or warning to safely evacuate members of the public who may be at risk
- Residents are awaiting evacuation assistance
- During a gas release of limited duration
- The location of the release has not been identified
- The public would be at higher risk if evacuated

Shelter-in-place is the use of a structure and its indoor atmosphere to temporarily separate individuals from a hazardous outdoor atmosphere. If asked to shelter-in-place:

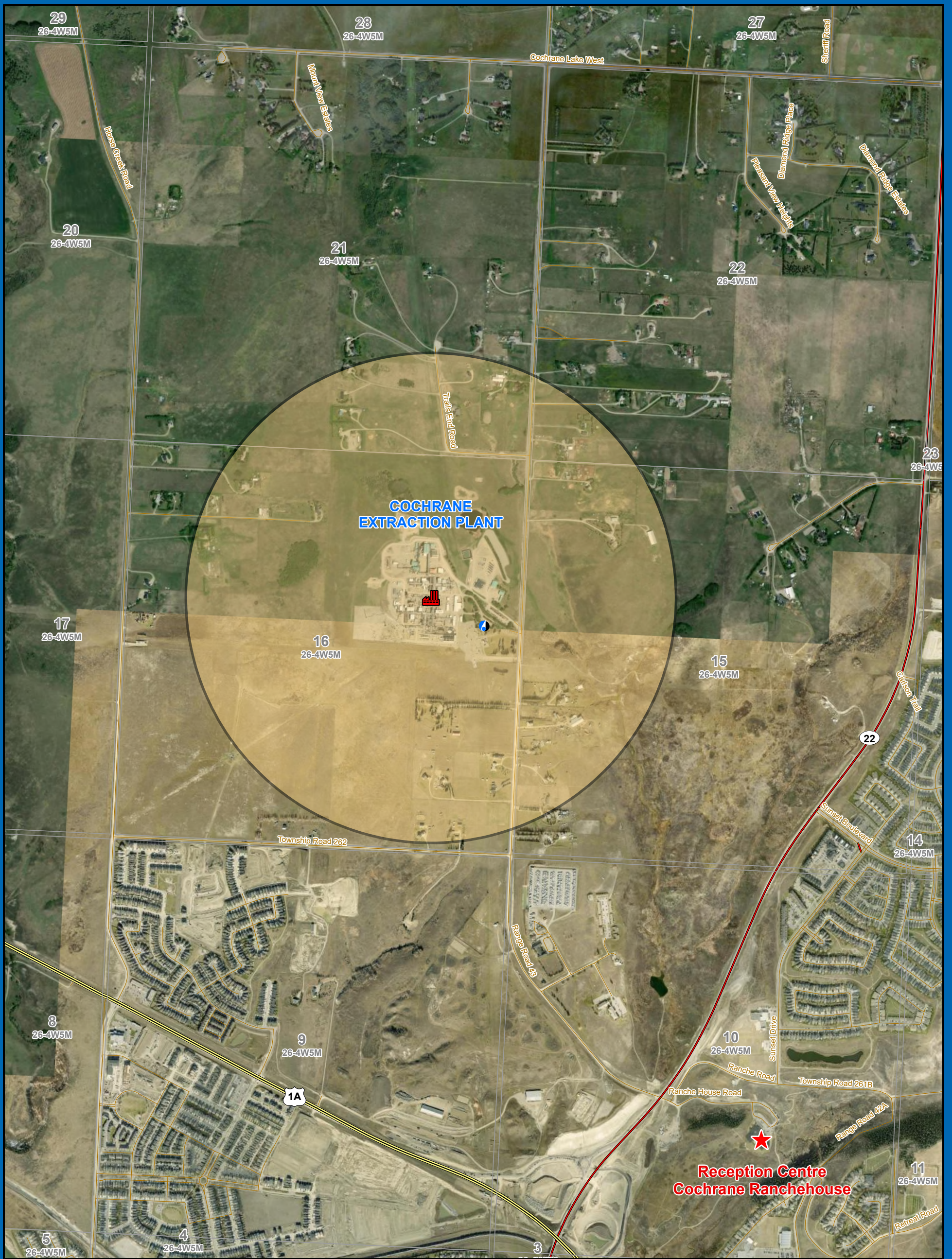
- Immediately gather everyone indoors and stay there
- Close and lock all windows and outside doors/vents
- If convenient, tape or block the gaps around the exterior door frames
- Avoid using the telephone, except for emergencies, so that you can be contacted by Inter Pipeline personnel
- Call Inter Pipeline's emergency number provided on the front of the brochure if:
 - you are experiencing symptoms or smelling odours
 - you have contacted fire, police or ambulance (so that we can coordinate our response)
- Stay tuned to local radio and television for information updates
- Even if you see people outside, do not leave until told it is safe to do so
- When it is safe, you will receive an "all-clear" message from Inter Pipeline's emergency callout system








Evacuation

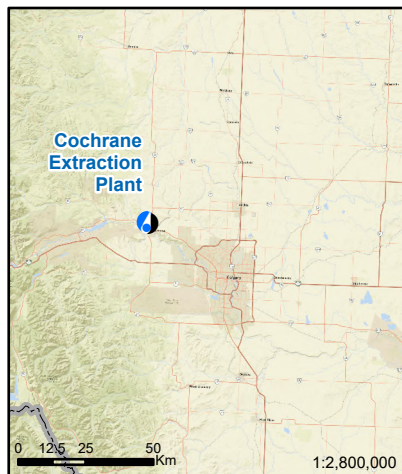
If you are advised to evacuate please do so immediately. Although you may not appear to be in danger, a shift in wind direction or increased concentrations of gas could change the situation rapidly. If there is no answer to our telephone calls, personnel will be dispatched to your residence/business to verify your location and inform you of the situation.

If you have no means of transportation, or if you require evacuation assistance, Inter Pipeline or local authorities will dispatch a vehicle to assist you.

A Reception Centre will be established and you will be advised of the location. If you choose to go elsewhere, please indicate this to the person contacting you. At the Reception Centre, Inter Pipeline representatives will be available to address any questions or concerns.



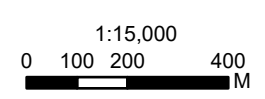
-  Reception Centre - Cochrane RancheHouse Conference Centre
-  Plant
-  IPL Office
-  Primary Highway
-  Secondary Highway
-  Local Road
-  Cochrane Extraction Plant Emergency Planning Zone (1 km Radius)



inter pipeline

Cochrane Extraction Plant

2026



Date: 15-Apr-2026 Page Size: 11"x17"
 Coordinate System: NAD 1983 UTM Zone 12N
 Created by: Inter Pipeline
 Note: Paper Copies are uncontrolled.
 This copy is valid only at the time of printing.