

# Resident Information Pamphlet

Boreal/Horizon/Olefins Pipeline

24-hour Emergency Number  
**1.800.721.6761**

## Emergency Contacts

In the event of an emergency, Inter Pipeline will be working with the local authorities. Please review this information as it will help answer questions you may have around your role in the emergency response process.

### Inter Pipeline Contacts

Offgas Pipelines .....	<b>24 HR:</b> 800.721.6771
Sherwood Park District Office .....	780.449.8948
Fort McMurray District Office .....	780.714.5452
Heartland Petrochemical Complex .....	<b>24 HR:</b> 527.456.3540
Redwater Olefins Facility Control Centre .....	<b>24 HR:</b> 800.998.2251
Inter Pipeline Ltd. – Calgary Head Office .....	403.290.6000

### Government Agencies

Alberta EDGE .....	<b>24 HR:</b> 800.272.6514
(AER, Environmental and Dangerous Goods Emergencies)	

### Local Authorities

<b>Police, Fire, Ambulance</b>	
Athabasca County .....	<b>Bus:</b> 780.675.2273
County of Thorhild .....	<b>Bus:</b> 780.398.3741
Fort Saskatchewan .....	<b>Bus:</b> 780.992.6200
Lac La Biche County .....	<b>Bus:</b> 780.623.1747
R.M. of Wood Buffalo .....	<b>Bus:</b> 780.743.7000
Strathcona County .....	<b>Bus:</b> 780.464.8111
Sturgeon County .....	<b>Bus:</b> 780.939.4321
Town of Redwater .....	<b>Bus:</b> 780.942.3519
Village of Boyle .....	<b>Bus:</b> 780.689.3643

### Reception Centre

Reception Centres are safe gathering places for people displaced from their homes as a result of an emergency or incident. Individuals can register and receive short-term basic services as well as information about the emergency situation. Local municipalities will determine the best physical location for a Reception Centre based on safety, accessibility and the services to be provided.

Please familiarize yourself with the important information in this brochure. If you have any questions please contact the appropriate individual or agency from the list above.

Additional information can be found at [www.interpipeline.com](http://www.interpipeline.com).

01.02.2022

## Overview

As part of the public safety process, Inter Pipeline (IPL) has created this information pamphlet about its Offgas Pipeline inclusive of the Boreal, Horizon and Olefins Pipeline sections. Please review this information as it will help to answer questions you may have around your role in the emergency response process. IPL is the owner of these HVP pipelines and facilities in your area. The Pipeline is located within the Counties of Athabasca, Thorhild, Lac La Biche, Sturgeon, Regional Municipality of Wood Buffalo (RMWB). IPL is required to have an emergency response plan (ERP) in place to respond to any incidents involving the Pipelines and to exercise them annually. The Boreal Pipeline is a 12” pipeline. The Horizon Pipeline is an 8” pipeline. The Olefins Pipeline consists of a 12” Propane pipeline, a 6” Propylene pipeline, and a 4” Butane pipeline.

## Why are you being contacted

Although the probability of an incident is low, Inter Pipeline is making advance preparations to ensure your safety. Inter Pipeline would like to ensure that:

1. You are aware of the Emergency Response Plan;
2. You are aware of the Reception Centre(s) and their locations;
3. You are advised of methods of communication to be used in case of an emergency; and
4. You are advised of public protection measures.

As part of Inter Pipeline's emergency management program, Inter Pipeline is seeking to obtain your personal contact information as you reside in the immediate area of our operations.

## Inter Pipeline & Local Authorities

Inter Pipeline has developed a comprehensive Emergency Response Plan (ERP) that identifies and/or defines personnel roles, communication systems, available resources, evacuation procedures and other emergency management information.

In the unlikely event of an emergency situation, Inter Pipeline will implement its ERP and will work with local authorities, including municipalities, to ensure public safety, protect the environment and control the emergency situation.

## Privacy of Personal Information

Inter Pipeline collects certain personal information from residents in order to enact the emergency measures as identified in this document. Inter Pipeline collects and uses this contact information for the sole purpose of administering its emergency response program.

## Public Preparedness and Notification

### What to do in an emergency

**IF YOU HAVE A TELEPHONE**, immediately call the Inter Pipeline emergency phone number listed on this brochure and follow instructions outlined by personnel. You may also call the AER emergency number as listed.

**IF YOU DO NOT HAVE A TELEPHONE**, immediately move away from the area. Travel at right angles to the wind until you can relocate upwind from the gas source. As quickly as you can, get to a telephone, call the Inter Pipeline emergency phone number at the phone number listed on this brochure.

## Levels of Emergency

<b>ALERT</b>	<b>ON SITE ONLY:</b> Immediate control of the hazard with progressive resolution of the situation.
<b>LEVEL 1</b>	<b>Low Impact:</b> No danger outside the company property.
<b>LEVEL 2</b>	<b>Moderate Impact:</b> Potential exists for the emergency to extend beyond company property.
<b>LEVEL 3</b>	<b>High Impact:</b> Uncontrolled hazard; public safety is jeopardized.

## Emergency Callout System

**The Emergency Callout system** is a telephone messaging system. This system may be used to provide residents with emergency information or instructions. When the phone rings, and is answered, the system will automatically issue an informative message about the situation and on the appropriate public protection measures required. At the end of the message, the following menu options allow the resident to respond:

Action	Meaning
<b>Press “1”</b>	Confirm receipt of the message.
<b>Press “2”</b>	Resident requires assistance; a company representative will send someone to the location to assist the resident.
<b>Press “3”</b>	Request a call from a company representative.

If there is no acknowledgement by the resident, the system will continue to call and a company representative will be sent to the location.

## Public Protection Measures

### Shelter - In - Place

- Avoid using the telephone, except for emergencies, so that you can be contacted by Inter Pipeline personnel;
- Call Inter Pipeline’s emergency number provided on the front of the pamphlet if:
  - you are experiencing symptoms or smelling odours;
  - you have contacted fire, police or ambulance (so that we can coordinate our response);
  - if you are unable to follow these instructions
- Stay tuned to local radio and television for possible information updates;
- Even if you see people outside, do not leave until told it is safe to do so;

When it is safe, you will receive an “all-clear” message from Inter Pipeline’s emergency response personnel. You may also receive, if required, instructions to:

- open all windows and doors, turn on fans and turn up thermostats. During this time the air outside may be fresher and you may choose to leave your building while ventilating.
- Once the building is completely ventilated, return all equipment to normal settings and operations.

### Evacuation

- **If you are advised to evacuate please do so immediately. Although you may not appear to be in danger, a shift in wind direction or increased concentrations of gas could change the situation rapidly.**
- **If there is no answer to our telephone calls, personnel will be dispatched to your residence/business to verify your location and inform you of the situation.**
- If you have no means of transportation, or if you require evacuation assistance, Inter Pipeline or local authorities will dispatch a vehicle to assist you.
- A Reception Centre will be established and you will be advised of the location. Please proceed to the Reception Centre by the designated route. If you choose to go elsewhere, please indicate this to the person contacting you.

At the Reception Centre, Inter Pipeline representatives will be available to address any questions or concerns.

### Ignition

In conjunction with Shelter-in-Place, the release may be ignited at the source in order to reduce your exposure to the hazard. Combustion will result in creation of carbon monoxide and carbon dioxide in the area of the ignition, which may allow for additional time for the public to safely evacuate if deemed necessary.

## Potential Health Impacts

### Potential Health Effects from HVP Product Exposure Propane, Butane, Pentane, Natural Gas Liquids

**Inhalation:** Product may displace oxygen and cause rapid suffocation. Central nervous system depression can occur if product is present in concentrations that will reduce the oxygen content of air below 18 % (vol). Symptoms may include headache, light-headedness, drowsiness, disorientation, vomiting and seizures. Unconsciousness and death may occur with severe oxygen deprivation. May cause respiratory irritation. Signs/symptoms may include cough, sneezing, nasal discharge, headache, hoarseness, and nose and throat pain.

**Skin:** Irritation of skin may occur and progress to dermatitis. Signs/symptoms may include localized redness, swelling, and itching. One component, Benzene may be absorbed through the skin.

**Eyes:** Irritation of the eyes may occur. Remove contact lenses, if present and easy to do.

**Ingestion:** Swallowing mists or vapours may cause accumulation in the lungs. May cause central nervous system issues, dizziness, headaches, giddiness, drowsiness, vomiting, diarrhea, fatigue, nausea, unconsciousness or death.

### Long term effects:

Defatting and drying of skin may occur and cause dermatitis, inhalation of one product component, Benzene, has been associated with blood disorders, including anemia and leukemia. Repeated exposure to high vapour concentrations may cause eye and respiratory irritation, giddiness, staggered gait, nausea, abdominal pain, loss of appetite, liver damage, kidney damage, and damage to the bone marrow including cancer.

## High Vapour Pressure (HVP) Products

HVP products include propane, butane, pentane, and Natural Gas Liquids (NGLs). At atmospheric pressure, HVP products are gases. Under pressure, HVP products exist in a liquid state. In humid air, a leak of an HVP product may form a visible white cloud of cold vapour considerably heavier than air. Under extreme conditions, pools of super-cooled liquid may briefly form. When HVP products vapourize, they expand (70 to 300 times) and can form a plume, which may drift downwind from the source under moderate wind speed conditions. Under higher wind speed conditions, the vapour would dissipate faster.

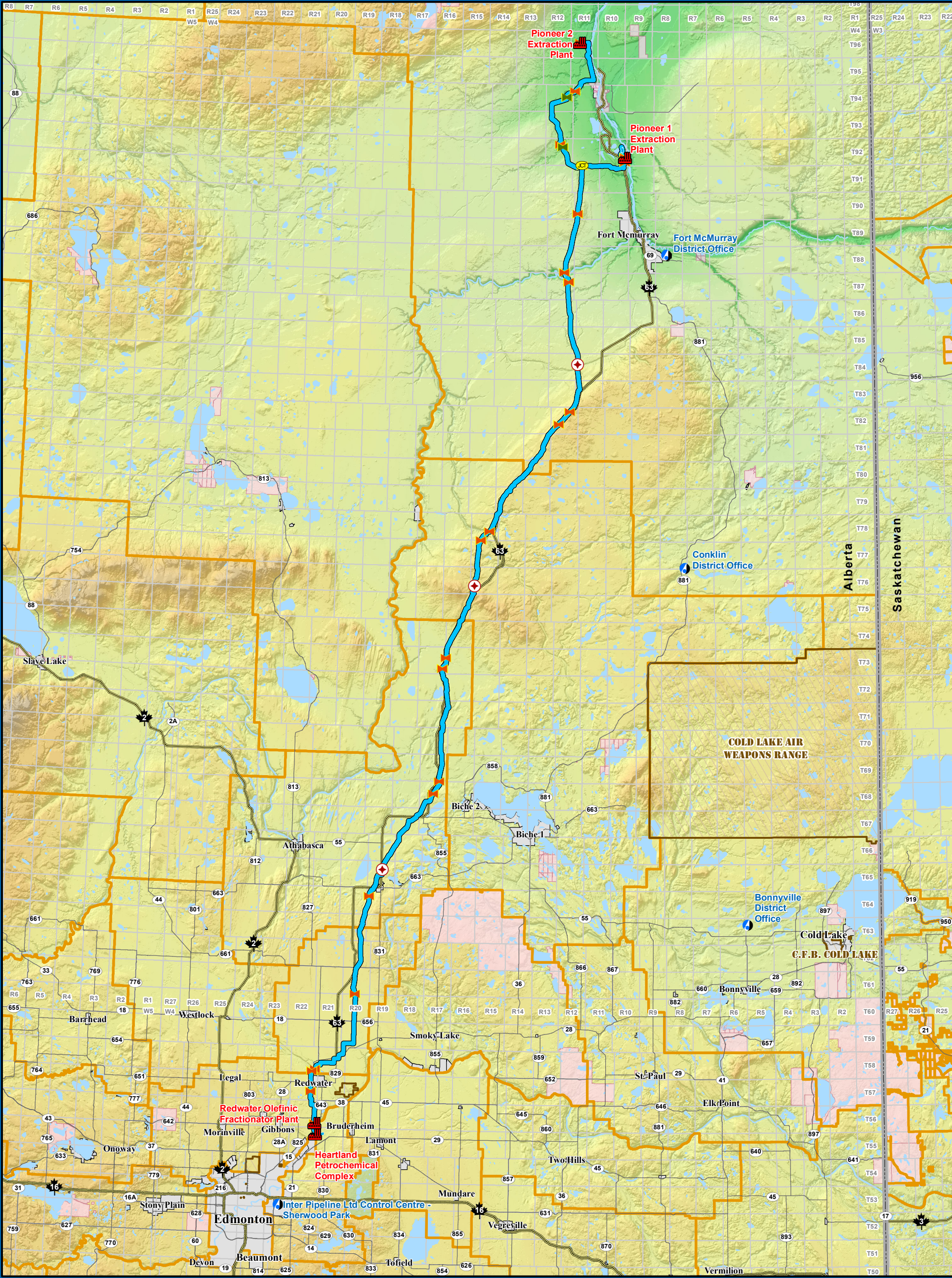
### Main hazards:

- Potential explosion hazards from delaying ignition of drifting vapour cloud.
- Fire hazard from burning gas and radiant heat.
- Critical hazard because of oxygen deficiency as expanding gas cloud or plume displaces air at ground level.

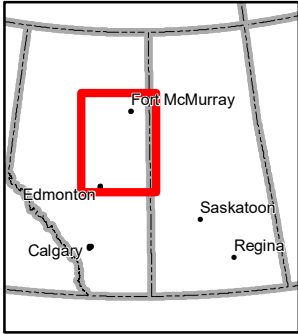
## Emergency Planning Zone

The primary hazard associated with high vapour pressure (HVP) products is direct exposure to flame. The hazard area for emergency response planning is based on a flash fire. Through research the Canadian Association of Petroleum Producers have recommended that 12” HVP pipelines that transport natural gas liquids with potential Ethylene , have an Emergency Planning Zone (EPZ) of 1200 meters on either side of the pipeline, 12” HVP pipelines that transport natural gas liquids with no potential Ethylene , have an Emergency Planning Zone (EPZ) of 1100 meters on either side of the pipeline and that an 8” HVP pipeline that transports natural gas liquids with a potential for Ethylene has an Emergency Planning Zone of 750 meters. The Boreal Pipeline has an EPZ of 1200 meters on either side of the pipeline. The Horizon Pipeline has an EPZ of 750 meters on either side of the pipeline. The Olefins Pipeline has an EPZ of 1100 meters on either side of the pipeline. EPZ’s have been set based on the largest pipeline size within the Right of Ways if multiple pipeline run together..





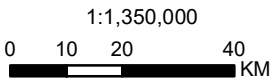
- |                    |                             |                     |
|--------------------|-----------------------------|---------------------|
| IPL Office         | <b>Active Pipelines</b>     | Major Highway       |
| Plant              | Offgas Pipeline             | Minor Highway       |
| Junction           | <b>Non-Active Pipelines</b> | Aboriginal Lands    |
| Pig Trap           | Offgas Pipeline             | City/Town           |
| <b>Valves</b>      |                             | County/Municipality |
| Controllable Valve |                             | Military Base       |
| Flow Valve         |                             | National Parks      |
|                    |                             | Provincial Boundary |
|                    |                             | Waterbody           |



**inter pipeline**

**Offgas Pipeline**

*System Map*



Date: 04-Feb-2022 Page Size: 11"x17"  
Coordinate System: NAD 1983 UTM Zone 12N  
Created by: GIS/Drafting Group  
Note: Paper Copies are uncontrolled.  
This copy is valid only at the time of printing.